



SCO INTERNATIONAL AI OLYMPIAD CLASS 1 QUESTION PAPER SET S

A clean, website-ready official paper with question blocks, answer key, and explanations
Formatted from the source paper with corrected punctuation, standardized branding, and properly placed AI visuals.

AI in Daily Life	Voice Assistants	Robots
Smart Apps	Pattern Recognition	Achievers

Questions	Level	Format	Document Use
35	Class 1	MCQ with visuals	Website / School / Print

Guidelines for the Candidate

Rebuilt in SCO's official website-ready format

Exam information

- Total questions: 35
- Time: 1 hour
- One correct option for each question
- Designed for AI awareness and early reasoning

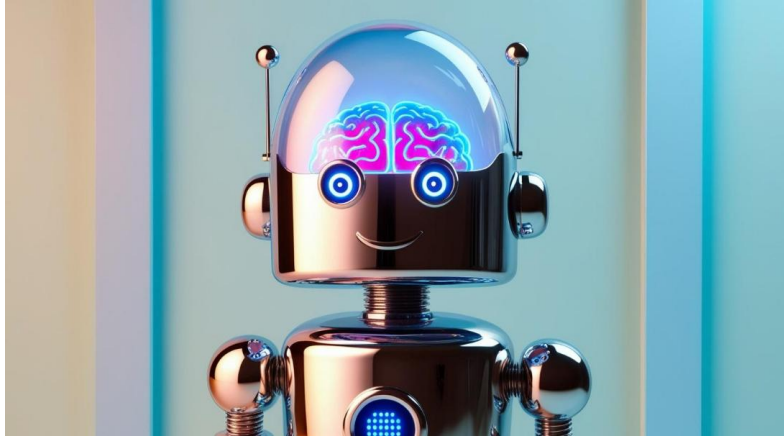
Editing checks applied

- punctuation and spacing normalized
- malformed prompt in Question 2 corrected
- branding standardized as SCO International AI Olympiad
- question visuals preserved inside the relevant blocks

Section 1 – Basic Concepts

Question 1

Look at this picture: What does AI stand for?



1. Animal Intelligence

2. Artificial Intelligence

3. Amazing Inventions

4. Automatic Information

Answer Key: Option 2

Explanation: The glowing brain on the robot shows that it thinks like a human, which is what Artificial Intelligence means.

Question 2

What part of daily life does this picture show?



1. A talking robot (an example of AI)

2. A handwritten letter

3. A regular bicycle

4. A wooden chair

Answer Key: Option 1

Explanation: The picture shows a robot interacting with a person, highlighting how AI is used in everyday technology.

Question 3

Which device uses AI to answer questions?



1. Smart Speaker

2. A Candle

3. A Pencil

4. A Balloon

Answer Key: Option 1

Explanation: The smart speaker in the picture listens and responds, demonstrating how AI can help answer our questions.

Question 4

What can AI help the camera to do in this picture?



1. Recognize faces in a photo

2. Smell a flower

3. Taste an apple

4. Listen to a drum

Answer Key: Option 1

Explanation: The camera in the imagined photo uses AI to detect and recognize faces, a common application in photography.

Question 5

Which AI-powered tool does this represent?



1. Google Translate

2. A Paintbrush

3. A Calculator

4. A Toy Car

Answer Key: Option 1

Explanation: The computer screen showing language conversion is a visual cue for Google Translate, an AI tool that helps translate text between languages.

Question 6

What is the role of this AI-powered chatbot?



1. Playing music

2. Answering questions online

3. Painting pictures

4. Flying in the sky

Answer Key: Option 2

Explanation: The conversation in the chat window shows that the AI chatbot is designed to provide help and answer questions.

Question 7

What does the AI in the car help it to do?



1. Sleep when tired

2. Watch the road and drive safely

3. Cook food

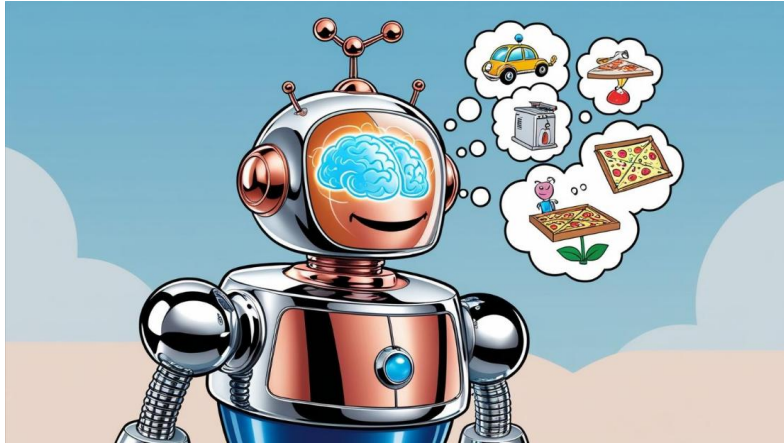
4. Sing songs

Answer Key: Option 2

Explanation: The image of the self-driving car with sensors shows that AI is used to observe surroundings and make safe driving decisions.

Question 8

What makes AI different from normal machines?



1. AI can learn and make decisions

2. AI needs fuel to run

3. AI only works at night

4. AI is always invisible

Answer Key: Option 1

Explanation: The thought bubbles on the robot's picture illustrate that AI can learn from experiences and make its own choices.

Question 9

Which of these is an AI-powered personal assistant?



1. Siri

2. A Light Bulb

3. A Spoon

4. A Backpack

Answer Key: Option 1**Explanation:** The friendly icon representing Siri on a smartphone shows an AI assistant that helps answer questions and manage tasks.

Question 10

Which game is shown as being played by AI?



1. Chess

2. Hide and Seek

3. Jumping Rope

4. Rock-Paper-Scissors

Answer Key: Option 1**Explanation:** The chessboard image with a computer playing indicates that AI can think through complex moves, just as seen in chess.

Section 2 – Examples of AI

Question 11

Which of these is a voice assistant?



1. A Talking Parrot

2. A Smart Speaker (like Alexa)

3. A Drawing Book

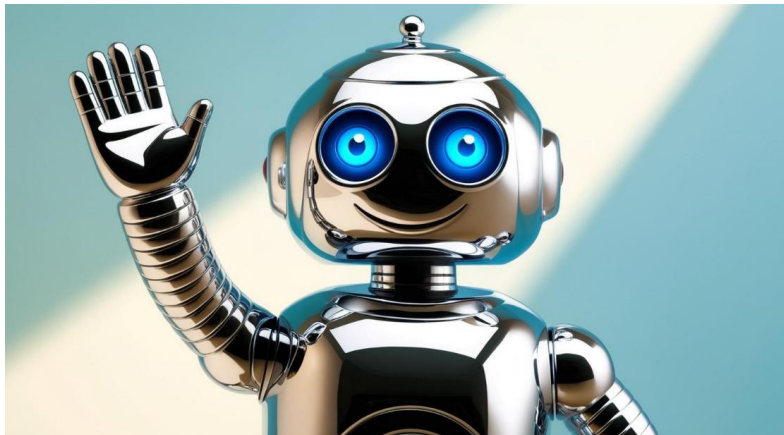
4. A Flashlight

Answer Key: Option 2

Explanation: The smart speaker in the picture uses AI to listen and respond to voice commands, which is what voice assistants do.

Question 12

What kind of device is this?



1. A Remote-Controlled Car

2. A Humanoid Robot

3. A Toy Doll

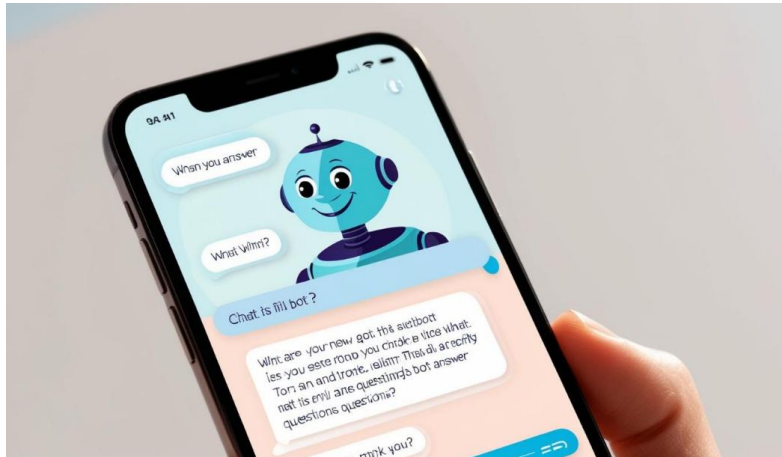
4. A Paper Plane

Answer Key: Option 2

Explanation: The image shows a robot with human-like features designed to interact, which is a clear example of AI-powered robotics.

Question 13

Which option best describes this AI tool?



1. A Simple Chat App with AI

2. A Video Game Controller

3. A Digital Clock

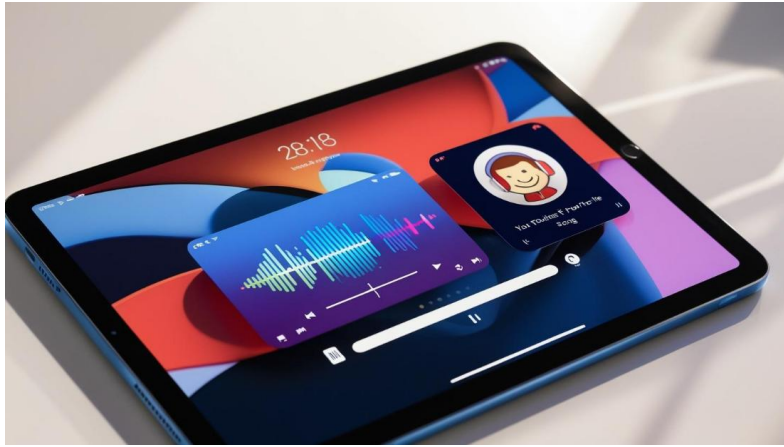
4. A Music Player

Answer Key: Option 1

Explanation: The chat app uses AI to understand and respond to user messages, making it an accessible example of AI in everyday apps.

Question 14

Which one is being used here?



1. A Manual Radio

2. A Voice Assistant (like Google Assistant)

3. A Printed Music Sheet

4. A Mechanical Metronome

Answer Key: Option 2

Explanation: The tablet demonstrates a voice assistant that can play music based on voice commands, illustrating another everyday AI application.

Question 15

What is this robot called?



1. A Robot Vacuum (like Roomba)

2. A Kitchen Mixer

3. A Remote Control Toy

4. A Stationary Fan

Answer Key: Option 1

Explanation: The picture of a small, mobile robot cleaning the floor is a great example of an AI-powered robot vacuum.

Question 16

Which option fits best?



1. A Digital Calculator

2. An AI Language Learning App

3. A Coloring Book App

4. A Map Application

Answer Key: Option 2

Explanation: The language learning app uses AI to personalize lessons and provide interactive feedback, making it a simple AI application in education.

Question 17

Which AI tool is this?



1. A Paper Map

2. A Navigation Voice Assistant

3. A Car Radio

4. A Fuel Gauge

Answer Key: Option 2

Explanation: The digital assistant on the car's dashboard uses AI to process voice commands and provide route guidance, illustrating practical use of AI.

Question 18

What type of robot is this?



1. A Toy Robot

2. A Social Robot

3. A Mechanical Clock

4. A Remote-Controlled Airplane

Answer Key: Option 2

Explanation: The friendly, interactive robot shown is designed for social interaction and learning, making it a good example of AI in social robotics.

Question 19

Which option is an example of this technology?



1. A Video Game

2. A Virtual Voice Assistant (like Siri)

3. A Phone Camera

4. A Static Wallpaper

Answer Key: Option 2

Explanation: The phone with a voice assistant icon represents how virtual assistants use AI to provide real-time information like weather updates.

Question 20

Which of these best shows an AI-powered toy?



1. A stuffed animal

2. A regular toy dog

3. A robot dog

4. A wooden figurine

Answer Key: Option 3

Explanation: The robot dog uses AI to respond to commands and interact with you, unlike a regular toy or stuffed animal which doesn't have smart features."



Section 3 – Pattern Recognition Games

Question 21

If the pattern continues, which fruit should come next?



1. Red apple

2. Green apple

3. Yellow apple

4. Blue apple

Answer Key: Option 1

Explanation: The pattern alternates: red, green, red, green. The next fruit should be a red apple.

Question 22

Which pair of objects have the same color?



1. Blue circle and red heart

2. Red square and red heart

3. Blue circle and blue triangle

4. Red square and blue triangle

Answer Key: Option 3

Explanation: Both the blue circle and blue triangle share the color blue, while the others are red or mixed.

Question 23

Imagine a pattern on a poster: a red square, then a blue circle, followed by a red square, and a blue circle. What should come next in the pattern?



1. Red square

2. Blue circle

3. Blue square

4. Red circle

Answer Key: Option 1

Explanation: The pattern repeats as red square, blue circle. After the blue circle, a red square is expected.

Question 24

Visualize a sequence of objects: a yellow star, then a green heart, followed by a yellow star, and a green heart. What is the color of the second object?



1. Yellow

2. Green

3. Blue

4. Red

Answer Key: Option 2

Explanation: The second object in the sequence is a green heart.

Question 25

Which flower appears first in the pattern?



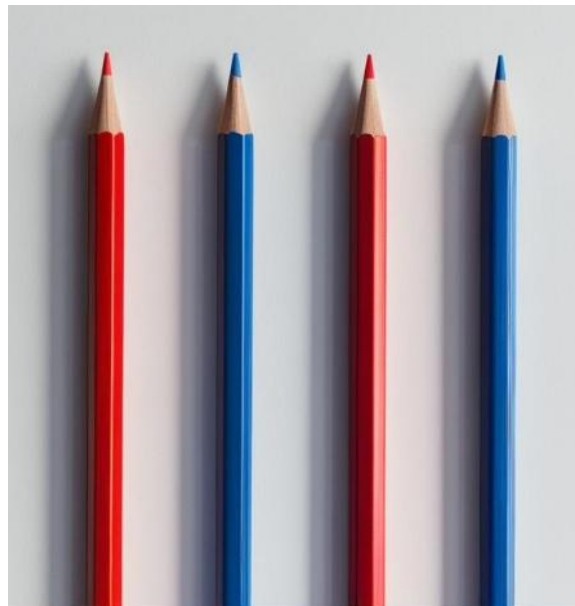
- | | |
|------------------------|-------------|
| 1. Blue tulip | 2. Red rose |
| 3. Both appear equally | 4. None |

Answer Key: Option 2

Explanation: The pattern begins with a red rose, and then alternates with the blue tulip.

Question 26

What color should the last pencil be?



- | | |
|----------|-----------|
| 1. Blue | 2. Red |
| 3. Green | 4. Yellow |

Answer Key: Option 2

Explanation: The pattern alternates red, blue, red, blue. Therefore, the fifth pencil should be red.

Question 27

Which ball is different from the others?



1. The first green ball

2. The yellow ball

3. The third green ball

4. They are all the same

Answer Key: Option 2

Explanation: Two balls are green, and one is yellow. The yellow ball is the one that differs.

Question 28

What shape comes next if the pattern continues?



1. Square

2. Triangle

3. Circle

4. Star

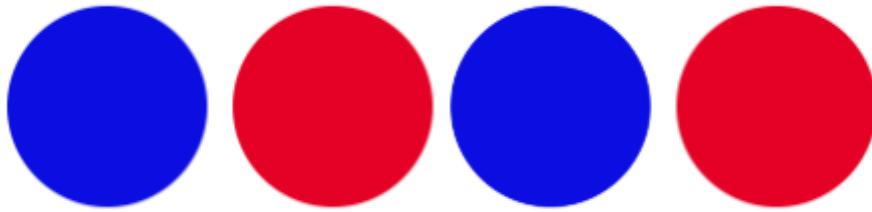
Answer Key: Option 3

Explanation: The pattern alternates between a circle and a square. After a square, a circle is expected.



Question 29

Which color should come next?



1. Blue

2. Red

3. Green

4. Yellow

Answer Key: Option 2

Explanation: The lights alternate as blue, red, blue, red, blue, so the next light should be red.

Question 30

If the sequence is based on alternation, what is the color of the middle car in a five-car line?



1. Red

2. Blue

3. Green

4. Yellow

Answer Key: Option 1

Explanation: The five-car line follows: red, blue, red, blue, red. The middle, or third, car is red.

Achievers Section

Question 31

Imagine you ask a friendly machine, 'What is 2+2?' and it answers '4.' Later, you ask, 'What is my favorite color?' and it says, 'I don't know.' Which statement is true about this machine?

- | | |
|--|---|
| 1. It is magical because it knows some things but not all. | 2. It is an AI that answers questions based on what it has learned. |
| 3. It is a broken machine. | 4. It is a toy that sometimes speaks. |

Answer Key: Option 2

Explanation: The machine uses AI to answer questions it has been programmed to know (like simple math), even though it may not know personal details like your favorite color.

Question 32

Imagine you have two helpers at home: one is a talking computer that always listens and replies to your questions, and the other is a toy robot that only moves when you press a button. Which helper shows more signs of using AI?

- | | |
|-----------------------------------|---|
| 1. The toy robot that only moves. | 2. The talking computer that answers questions. |
| 3. Both are exactly the same. | 4. Neither uses AI. |

Answer Key: Option 2

Explanation: The talking computer uses voice recognition and processing—features of AI—to understand and answer questions, while the toy robot follows simple button commands.

Question 33

Imagine you are naming three friends: one is Siri, one is Alexa, and one is a regular telephone. Which one is powered by AI?

- | | |
|----------------------------|-----------------|
| 1. Siri | 2. Telephone |
| 3. Both Siri and Telephone | 4. None of them |

Answer Key: Option 1

Explanation: Siri is an AI-powered virtual assistant that can understand and answer questions, whereas a regular telephone only connects calls without any smart features.

Question 34

Imagine you have a smart helper at home that listens to your voice and turns on the lights or plays your favorite song when you ask. What do we call this kind of helper?

- | | |
|----------------------|-------------------|
| 1. A voice assistant | 2. A regular lamp |
| 3. A simple toy | 4. A calculator |

Answer Key: Option 1

Explanation: A voice assistant uses AI to understand and respond to voice commands, making it a smart helper for many tasks around the house.

Question 35

Imagine a computer that plays games with you. It learns new ways to win every time you play, and soon, it always wins. Is its winning streak because it is magic or because it is using something special?

- | | |
|-------------------------|---|
| 1. Because it is magic. | 2. Because it is using artificial intelligence. |
| 3. Because it is lucky. | 4. Because you are not trying hard. |

Answer Key: Option 2

Explanation: The computer learns from each game and improves its strategies using AI. It's not magic—it's the power of AI that helps it become a champion at the game.



Answer Key Summary

Quick-check grid for teachers and reviewers

Q1-Q7	Q8-Q14	Q15-Q21	Q22-Q28	Q29-Q35
1. B	8. A	15. A	22. C	29. B
2. A	9. A	16. B	23. A	30. A
3. A	10. A	17. B	24. B	31. B
4. A	11. B	18. B	25. B	32. B
5. A	12. B	19. B	26. B	33. A
6. B	13. A	20. C	27. B	34. A
7. B	14. B	21. A	28. C	35. B