

SCO INTERNATIONAL OLYMPIAD

CLASS 2 QUESTION PAPER

SCO INTERNATIONAL AI OLYMPIAD 2025-26

Question Paper Set S

Designed for early AI awareness through visual reasoning, color and shape matching, simple pattern recognition, and safe human-AI cooperation.

A website-ready, classroom-ready paper for students, teachers, and schools.

AI Basics	Voice Assistants	Learning Apps	Pattern Games
Color Matching	Logic Sequences	Safe AI Use	Problem Solving
Class	2	Subject	Artificial Intelligence
Questions	35	Time	1 hour

Guidelines for the Candidate

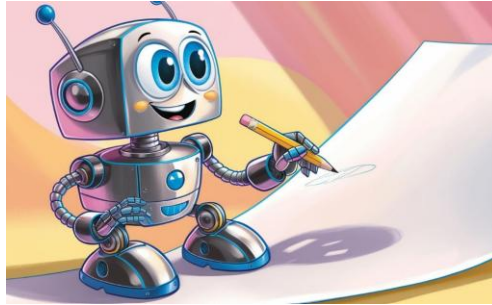
Read carefully before attempting the paper

1. Total Questions: 35 | Time: 1 hour.
2. Each question has only one correct answer. Select one option only.
3. AI questions may include images, matching tasks, pattern sequences, and simple everyday examples.
4. Read each question carefully and observe the image inside the question block when provided.
5. The paper checks basic AI awareness, visual reasoning, pattern recognition, and logical thinking.
6. All answers are provided with explanations for student learning and teacher review.

Segment	Question Nos.	Focus Area	Purpose
1	1-20	AI in daily life	Identify simple AI uses through images and examples
2	21-30	Pattern recognition	Match colors, shapes, and repeating visual patterns
3	31-35	Logic and sequences	Complete number, color, and symbol patterns

Section 1 - Basic Concepts: Introduction to AI in Daily Life

Q1. Which statement best describes what the robot in the image is doing?



A	The robot is sleeping.
B	The robot is learning and drawing.
C	The robot is eating.
D	The robot is dancing.

Answer: B - The robot is learning and drawing.

Explanation: The image shows a robot drawing. This represents AI being used for learning, creativity, and task performance. AI can help create pictures when it is trained with examples and instructions.

Skill Focus: AI in creative tasks

Q2. What does this image most likely represent?



A	The computer is thinking and learning like a human.
B	The computer is turning off.
C	The computer is playing music.
D	The computer is broken.

Answer: A - The computer is thinking and learning like a human.

Explanation: The smiling screen and light bulb show an idea or thinking. It is a simple way to represent AI systems that can learn from information and make helpful responses.

Skill Focus: AI learning concept

Q3. What AI function is most likely being shown in this image?



A	Voice recognition that understands spoken words.
B	A phone call with no sound.
C	A video game being played.
D	A silent movie.

Answer: A - Voice recognition that understands spoken words.

Explanation: The microphone and sound waves show that the phone is listening to spoken words. Voice recognition helps devices understand speech and respond to commands.

Skill Focus: Voice recognition

Q4. What concept does this image illustrate?



SCO INTERNATIONAL AI OLYMPIAD | CLASS 2 | SET S

A	A computer playing music.
B	AI helping kids learn and practice math and reading.
C	A computer turning off lights.
D	Kids watching cartoons.

Answer: B - AI helping kids learn and practice math and reading.

Explanation: The learning screen with letters, numbers, and a robot icon shows AI being used as a study helper. AI learning tools can support practice, feedback, and revision.

Skill Focus: AI in education

Q5. What does this image most likely represent?



A	AI analyzing data to give feedback on learning performance.
B	A computer that is drawing a picture.
C	A robot that is cleaning the floor.
D	A phone battery indicator.

Answer: A - AI analyzing data to give feedback on learning performance.

Explanation: Charts, stars, and smiley markers represent learning information. AI can use such data to give feedback and help learners understand progress.

Skill Focus: Feedback and data

Q6. What idea is illustrated by this image?



A	Robots and children are playing together.
B	AI can work together with humans to help them learn and grow.
C	Robots are replacing teachers.
D	Children are building a robot.

Answer: B - AI can work together with humans to help them learn and grow.

Explanation: The high-five between a child and a robot shows cooperation. AI should be understood as a helpful tool that can support people, not as a replacement for human care and teaching.

Skill Focus: Human-AI cooperation

Q7. What is the AI in the image most likely doing?



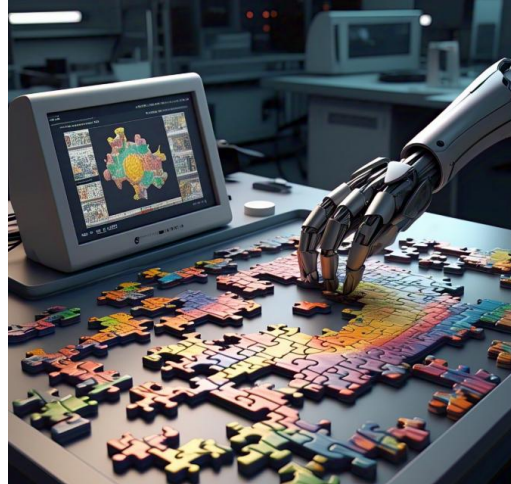
A	It is randomly shuffling the cards.
B	It is helping to remember which cards have been flipped to make matching pairs.
C	It is drawing extra cards.
D	It is hiding all the cards permanently.

Answer: B - It is helping to remember which cards have been flipped to make matching pairs.

Explanation: The card-matching image suggests memory and pattern tracking. In simple games, AI may remember previous moves and help find matching pairs.

Skill Focus: Memory in games

Q8. What does this image represent in terms of AI applications?



A	The computer is playing a puzzle game using AI to recognize patterns and solve problems.
B	The computer is breaking the puzzle.
C	The computer is ignoring the puzzle pieces.
D	The computer is drawing a new puzzle.

Answer: A - The computer is playing a puzzle game using AI to recognize patterns and solve problems.

Explanation: The robot hand assembling a puzzle shows pattern recognition and problem-solving. AI systems often use patterns to decide the next step in a task.

Skill Focus: Pattern recognition

Q9. What is the main purpose of the AI shown in this educational game?



A	To force the same questions on every student.
B	To adapt the difficulty level of questions to match the student's learning progress.
C	To display random images without any connection to the game.
D	To make the tablet turn off.

Answer: B - To adapt the difficulty level of questions to match the student's learning progress.

Explanation: Adaptive learning changes practice based on a learner's progress. If a student is doing well, questions may become harder; if the student needs help, the system may give easier practice.

Skill Focus: Adaptive learning

Q10. What does this image likely illustrate about AI in games?



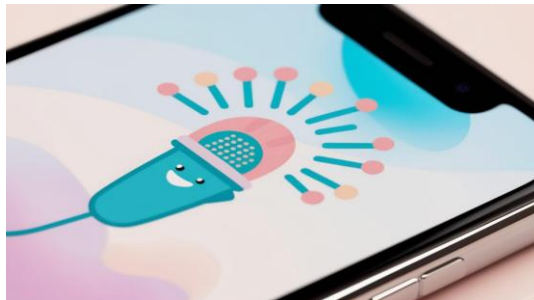
A	The AI uses random movements to get lost in the maze.
B	The AI helps solve the maze by finding the best path, similar to how it can learn and improve over time.
C	The maze is not related to AI at all.
D	The robot ignores the maze completely.

Answer: B - The AI helps solve the maze by finding the best path, similar to how it can learn and improve over time.

Explanation: A maze is a good example of planning and problem-solving. AI can test possible paths and select a better route to reach the goal.

Skill Focus: Planning and paths

Q11. What does this picture show?



A	A dancing phone
B	A voice assistant that listens and talks
C	A toy phone with no sound
D	A drawing app on a phone

Answer: B - A voice assistant that listens and talks

Explanation: The phone, microphone, and sound waves show a voice assistant. Voice assistants can listen to spoken questions and reply with useful information.

Skill Focus: Voice assistant

Q12. What does the robot in the image represent?



A	A sleeping robot
B	A robot that can help with learning

C	A robot that only cleans
D	A robot that makes music

Answer: B - A robot that can help with learning

Explanation: The friendly robot holding a book represents AI as a learning helper. It shows how technology can support reading and study activities.

Skill Focus: Learning helper

Q13. What is this app most likely used for?



A	Playing music only
B	Learning and solving puzzles
C	Watching movies
D	Taking photos

Answer: B - Learning and solving puzzles

Explanation: The tablet shows puzzles and numbers. This suggests an educational app that helps children learn through interactive practice.

Skill Focus: Educational apps

Q14. What does this image represent?



SCO INTERNATIONAL AI OLYMPIAD | CLASS 2 | SET S

A	A computer that only shows cartoons
B	A chat program that uses AI to answer questions
C	A video game with no talking
D	A computer that plays music only

Answer: B - A chat program that uses AI to answer questions

Explanation: A chat bubble and a robot character represent a chatbot or AI assistant. Such tools can answer simple questions when used safely and appropriately.

Skill Focus: Chatbot basics

Q15. What is the main idea shown in this image?



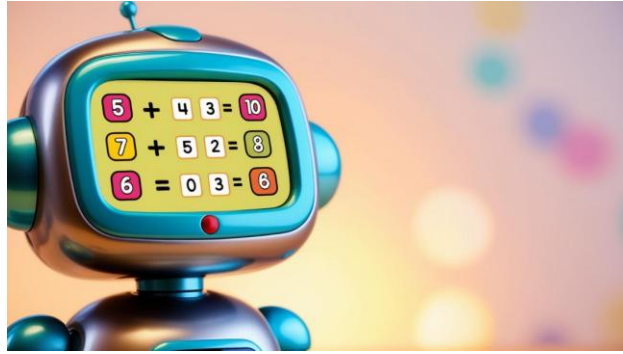
A	Robots taking over the classroom
B	AI helping children learn letters and words
C	Children playing outside
D	A teacher writing on a blackboard

Answer: B - AI helping children learn letters and words

Explanation: The smart board, robot, and letters show that AI can support classroom learning. It can help students practice words, letters, and simple concepts.

Skill Focus: AI classroom use

Q16. What does this robot do?



A	It tells jokes
B	It helps solve math problems
C	It only plays music
D	It cleans the room

Answer: B - It helps solve math problems

Explanation: The robot screen shows math symbols. This suggests the robot is helping learners practice or solve math problems.

Skill Focus: AI math practice

Q17. What is this image likely showing?



A	A phone that is confused
B	A voice assistant answering questions
C	A broken phone
D	A phone used only for calling

Answer: B - A voice assistant answering questions

Explanation: The phone face and question marks show a digital assistant thinking about a question and preparing an answer.

Skill Focus: Question answering

Q18. What is the purpose of this matching game?



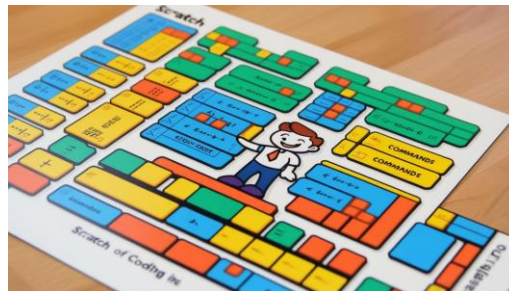
A	To help children learn animal names and sounds
B	To show random pictures
C	To play music only
D	To draw pictures

Answer: A - To help children learn animal names and sounds

Explanation: The animal matching game helps children connect pictures with names or sounds. AI can provide feedback when a match is correct or incorrect.

Skill Focus: Learning games

Q19. What does this image represent?



A	A drawing application
B	A simple coding platform used to create games and stories
C	A computer playing a video
D	A photo editing tool

Answer: B - A simple coding platform used to create games and stories

Explanation: The block-based layout looks like a beginner coding environment. Such platforms help children build simple stories, games, and logic sequences.

Skill Focus: Block-based coding

Q20. What does this picture show about AI?



A	AI and humans can work together to learn and solve problems
B	AI replaces human teachers completely
C	Robots and humans are in a race
D	The child is teaching the robot to dance

Answer: A - AI and humans can work together to learn and solve problems

Explanation: The high-five and light bulb show teamwork and ideas. AI is best understood as a tool that can help people learn, create, and solve problems responsibly.

Skill Focus: Human-AI teamwork

Section 2 - Pattern Recognition, Matching, and Sorting

Q21. If you see a picture of a red apple, which object would best match it by color?



A	A blue ball
---	-------------

B	A red ball
C	A green leaf
D	A yellow star

Answer: B - A red ball

Explanation: The apple is red. The best color match is another red object, so a red ball is correct. This is a simple pattern-recognition task.

Skill Focus: Color matching

Q22. In a pattern recognition game, you see this sequence of shapes: red circle, blue square, green triangle, red circle, blue square, __. Which object should come next?



A	Blue square
B	Green triangle
C	Red circle
D	Yellow star

Answer: B - Green triangle

Explanation: The pattern repeats every three shapes: red circle, blue square, green triangle. After the second blue square, the next object should be the green triangle.

Skill Focus: Repeating pattern

Q23. Which of these colors is NOT traditionally one of the three primary paint colors used in a color-matching game?

A	Red
B	Blue
C	Yellow
D	Green

Answer: D - Green

Explanation: In traditional paint mixing for young learners, red, blue, and yellow are usually taught as primary colors. Green is made by mixing blue and yellow, so it is not one of those primary paint colors.

Skill Focus: Color categories

Q24. In a game that alternates objects by color and shape, the sequence is: blue square, red circle, blue square, red circle, __. What comes next?



A	Blue square
B	Red circle
C	Blue circle
D	Red square

Answer: A - Blue square

Explanation: The sequence alternates between blue square and red circle. Since the last object shown is a red circle, the next object should be a blue square.

Skill Focus: Alternating pattern

Q25. Which of the following pairs is a correct match by color?

A	A blue car and a red car
B	A green car and a green car
C	A yellow car and a blue car
D	A red car and a green car

Answer: B - A green car and a green car

Explanation: A correct color match requires both objects to have the same color. Two green cars match because both are green.

Skill Focus: Same/different recognition

Q26. In a game where you must match fruits by color, if a yellow banana is shown, which fruit would be the best match?

A	A red apple
---	-------------

B	A yellow lemon
C	A blue grape
D	A green pear

Answer: B - A yellow lemon

Explanation: A banana is yellow. A yellow lemon is the best match because it shares the same color.

Skill Focus: Classification

Q27. In a memory matching game, the displayed sequence is: red star, blue star, green star, red star, blue star, green star, __. Which star should come next?



A	Green star
B	Blue star
C	Red star
D	Yellow star

Answer: C - Red star

Explanation: The sequence repeats red, blue, green. After green star, the pattern starts again with red star.

Skill Focus: Sequence memory

Q28. In a game combining both shape and color recognition, which pairing shows a correct match?

A	A red triangle and a red triangle
B	A blue circle and a green circle
C	A yellow square and a red square
D	A green star and a blue star

Answer: A - A red triangle and a red triangle

Explanation: The pairing is correct only when both the shape and the color match exactly. Two red triangles are a perfect match.

Skill Focus: Multi-feature matching

Q29. In a game where you must identify the next color in a repeating sequence, the colors appear in this order: red, green, blue, red, green, __. Which color comes next?



A	Green
B	Red
C	Blue
D	Yellow

Answer: C - Blue

Explanation: The sequence follows a cycle: red, green, blue. After red and green, the next color is blue.

Skill Focus: Color sequence

Q30. In a pattern-recognition game, objects appear in this order: red heart, red star, red circle, blue heart, blue star, blue circle. What is the pattern?

A	The shapes change randomly.
B	The color changes from red to blue while the shapes repeat in the same order: heart, star, circle.
C	Only the colors change while shapes stay the same.
D	The objects are matched with completely different colors each time.

Answer: B - The color changes from red to blue while the shapes repeat in the same order: heart, star, circle.

Explanation: The first three objects are red in the order heart, star, circle. The same shape order repeats in blue. This shows a consistent color-and-shape pattern.

Skill Focus: Pattern explanation

Section 3 - Logical Thinking and Number Patterns

Q31. In the number sequence 2, 4, 6, 8, __, which number comes next?

A	9
---	---

B	10
C	11
D	12

Answer: B - 10

Explanation: The pattern increases by 2 each time: 2, 4, 6, 8. So the next number is 10.

Skill Focus: Number pattern

Q32. In a shape pattern puzzle, the sequence is: Square, Circle, Triangle, Square, Circle, __. What shape should come next?

A	Square
B	Triangle
C	Circle
D	Star

Answer: B - Triangle

Explanation: The pattern repeats every three shapes: Square, Circle, Triangle. After Circle, the next shape is Triangle.

Skill Focus: Shape sequence

Q33. In a color pattern game, the sequence is: Red, Blue, Green, Red, Blue, __. Which color comes next?

A	Blue
B	Green
C	Red
D	Yellow

Answer: B - Green

Explanation: The sequence cycles through Red, Blue, Green. After Red and Blue, the next color is Green.

Skill Focus: Color pattern

Q34. In a logical puzzle, which number is the odd one out: 3, 5, 7, 8, 11?

A	3
B	5
C	8
D	11

Answer: C - 8

Explanation: All the numbers except 8 are odd numbers. The number 8 is even, so it is the odd one out.

Skill Focus: Odd-one-out

Q35. Consider this repeating symbol sequence: Star, Heart, Diamond, Star, Heart, Diamond, __. Which symbol should complete the pattern?

A	Heart
B	Diamond
C	Star
D	Circle

Answer: C - Star

Explanation: The pattern repeats as Star, Heart, Diamond. After the second Diamond, the next symbol starts the pattern again with Star.

Skill Focus: Symbol pattern

Consolidated Answer Key

All 35 answers with skill focus

Q. No.	Answer	Correct Option	Segment	Skill Focus
1	B	The robot is learning and drawing.	Section 1	AI in creative tasks
2	A	The computer is thinking and learning like a human.	Section 1	AI learning concept

SCO INTERNATIONAL AI OLYMPIAD | CLASS 2 | SET S

Q. No.	Answer	Correct Option	Segment	Skill Focus
3	A	Voice recognition that understands spoken words.	Section 1	Voice recognition
4	B	AI helping kids learn and practice math and reading.	Section 1	AI in education
5	A	AI analyzing data to give feedback on learning performance.	Section 1	Feedback and data
6	B	AI can work together with humans to help them learn and grow.	Section 1	Human-AI cooperation
7	B	It is helping to remember which cards have been flipped to make matching pairs.	Section 1	Memory in games
8	A	The computer is playing a puzzle game using AI to recognize patterns and solve problems.	Section 1	Pattern recognition
9	B	To adapt the difficulty level of questions to match the student's learning progress.	Section 1	Adaptive learning
10	B	The AI helps solve the maze by finding the best path, similar to how it can learn and improve over time.	Section 1	Planning and paths
11	B	A voice assistant that listens and talks	Section 1	Voice assistant
12	B	A robot that can help with learning	Section 1	Learning helper
13	B	Learning and solving puzzles	Section 1	Educational apps

SCO INTERNATIONAL AI OLYMPIAD | CLASS 2 | SET S

Q. No.	Answer	Correct Option	Segment	Skill Focus
14	B	A chat program that uses AI to answer questions	Section 1	Chatbot basics
15	B	AI helping children learn letters and words	Section 1	AI classroom use
16	B	It helps solve math problems	Section 1	AI math practice
17	B	A voice assistant answering questions	Section 1	Question answering
18	A	To help children learn animal names and sounds	Section 1	Learning games
19	B	A simple coding platform used to create games and stories	Section 1	Block-based coding
20	A	AI and humans can work together to learn and solve problems	Section 1	Human-AI teamwork
21	B	A red ball	Section 2	Color matching
22	B	Green triangle	Section 2	Repeating pattern
23	D	Green	Section 2	Color categories
24	A	Blue square	Section 2	Alternating pattern
25	B	A green car and a green car	Section 2	Same/different recognition
26	B	A yellow lemon	Section 2	Classification
27	C	Red star	Section 2	Sequence memory
28	A	A red triangle and a red triangle	Section 2	Multi-feature matching
29	C	Blue	Section 2	Color sequence
30	B	The color changes from red to blue while the shapes repeat in	Section 2	Pattern explanation

SCO INTERNATIONAL AI OLYMPIAD | CLASS 2 | SET S

Q. No.	Answer	Correct Option	Segment	Skill Focus
		the same order: heart, star, circle.		
31	B	10	Section 3	Number pattern
32	B	Triangle	Section 3	Shape sequence
33	B	Green	Section 3	Color pattern
34	C	8	Section 3	Odd-one-out
35	C	Star	Section 3	Symbol pattern

End of Paper